

**BUILD RELIABLE
MOBILE SOFTWARE.**

**QUICKLY AND COST-
EFFECTIVELY.**

TIME AFTER TIME.

AGENCY MOBILE PLATFORM: DEVELOPER PRODUCTIVITY & QA TOOLING

Syclo's Agency is an integrated development platform that lets you quickly create, configure and test complex mobile applications. Based on a service-oriented architecture and nested in the powerful Eclipse development environment, Agency combines the power of familiar tools and mobile-specific enhancements to make your job easy every step of the way.

DEVELOPMENT ENVIRONMENT

ECLIPSE-BASED IDE

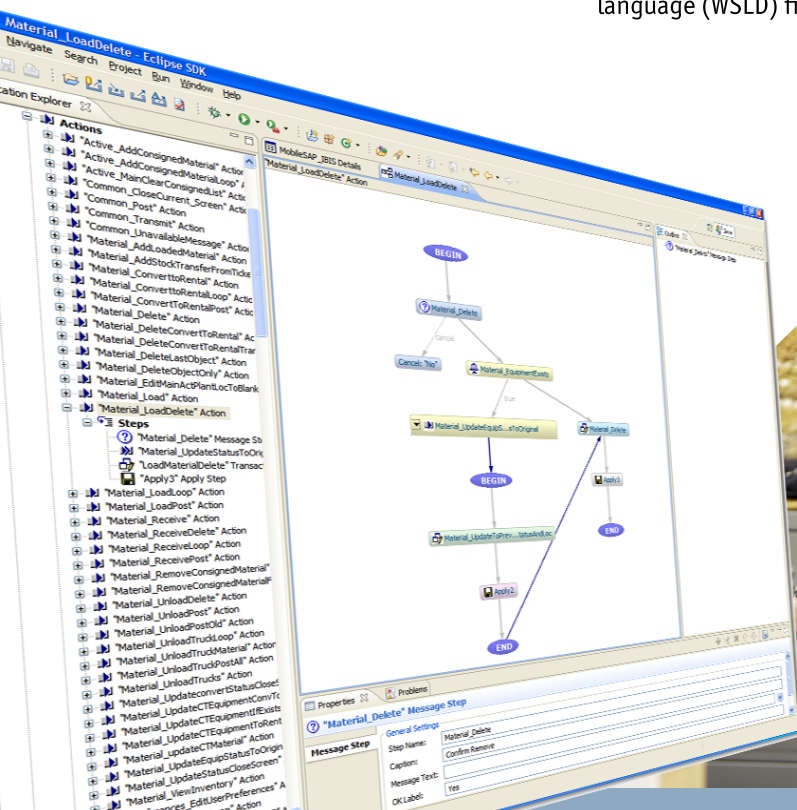
Syclo's Agency Editor is a plug-in for the widely used Eclipse integrated development environment. Agency takes advantage of Eclipse's powerful Java tooling and extensibility, while adding domain-specific tools to aid the mobile aspect of development. Users can even integrate Java and Agency projects in a single Eclipse workspace to speed application creation through sharing of Java classes, steplets and other components.

SERVICE-ORIENTED APPLICATION DEVELOPMENT

With Agency, software development doesn't mean writing code. Syclo's IDE is created around service-oriented application development, an approach that lets users quickly compile mobile applications from building blocks like transaction templates, synchronization protocols, screen sets and other objects. These components can be imported from existing applications or created from external data sources like Java objects, SQL databases or web service definition language (WSDL) files.

OBJECT AND CLIENT VISUALIZATION

Agency Editor further simplifies development by making many common tasks visual rather than conceptual. You can easily model business logic with the Diagram View, which logically displays and provides access to actions, steps, conditional logic, looping and other elements and relationships. Complex rules are also easy to create with a wizard-driven interface that emphasizes point-and-click reliability over freehand code writing. You can even instantly modify the appearance of your mobile application with Syclo's visual screen editor. This tool lets you fine-tune screen layouts by simply dragging and dropping fields, buttons and columns to achieve the desired result.



POWERFUL DEVELOPER PRODUCTIVITY TOOLS

- **DOCUMENTATION TOOLS** allow developers to annotate application components for future review. By including context, details and references for complex business logic and other elements, users can save considerable time during future revisions and in bringing new team members up to speed. Agency even allows developers to set reminders on application definitions to help with project management and planning for new functionality.
- **WIZARD-DRIVEN RULE EDITOR** simplifies creation of complex business logic through a combination of wizards that drive users through configuration of prebuilt functions and the ability to create rules using Javascript. A built-in rule tester helps catch bad rules on the spot, allowing developers to put in data to see what the rule returns.
- **REFERENTIAL INTEGRITY CHECKING** simplifies development by instantly alerting the user to broken references and other application inconsistencies. This allows developers to catch many minor mistakes before the project goes to testing.
- **IMPORT AND EXPORT** enables you to export components or functionality from one application into another. This saves time by allowing reuse of multiple objects, screen sets and business logic. For some mobile processes, entire application templates are available, shrinking development time by up to 90 percent.
- **TEAM CONFIGURATION** feature set enables multi-developer support by establishing a single application repository that developers can share and update in real time.

TEST ENVIRONMENT

AUTOMATED TEST SCRIPTING

Agency's powerful test environment lets you emulate software behavior on target device platforms and test applications for errors in appearance and business logic. The automated test scripting functionality lets you record and play back scripts that automatically navigate to all screens, click on all buttons and process pre-defined transactions in the mobile application to check it for bugs. This can include testing for real-life conditions like spotty network coverage, high server loads, backend synchronization issues and peripheral inputs. Automated test scripting is extremely useful for achieving repeatability while regression-testing the mobile application.

FULL VISIBILITY INTO APPLICATION PERFORMANCE

You also have testing capabilities and visibility into your application at a fine level of detail.

Tools like action debugging and inspectors for objects, transactions and complex tables allow developers to monitor behavior of these application definitions in response to client inputs. Once the application is in production, extensive logging tools are in place for actions, events, messages, server logs and users — all pointing administrators to potential problem areas so they can be quickly addressed.

TEST LOCALIZATION SETTINGS

The Agency Test Environment lets you perform all testing and emulate application appearance with respect to all localization settings you have built into your mobile application, including:

- Languages
- Date/time
- Currency
- Number formatting



Syclo LLC
1721 Moon Lake Boulevard | Suite 300
Hoffman Estates, IL 60169
800.567.9256 toll free | info@syclo.com
www.syclo.com

Syclo International Limited | Europe, Middle East & Africa
Fetcham Park House, Lower Road, Fetcham,
Leatherhead, Surrey, KT22 9HD, United Kingdom
+44 (0) 1372 371031 phone | +44 (0) 1372 371032 fax